



Put your data in the right hands.

WATER QUALITY/WASTEWATER

ENVIRONMENTAL

BIOTECHNOLOGY

RESEARCH & DEVELOPMENT

CONTRACT RESEARCH
ORGANIZATIONS (CRO)

COMMERCIAL TESTING

CHEMICAL

AGRICULTURE

ENERGY

FOOD & BEVERAGE

INDUSTRIAL HYGIENE

PUBLIC HEALTH

MANUFACTURING

GENETIC SCREENING

MATERIALS TESTING

PHARMACEUTICAL

FORENSICS

PROCESS CONTROL

MINING



CHANGE YOUR SOFTWARE, NOT YOUR PROCESS.

If you have to change the way your laboratory does business in order to use your Laboratory Information Management System, then your LIMS is letting you down.

TITAN® is a complete laboratory automation and business management solution, robustly adaptable and capable of meeting your organization's specific needs. It leverages workflows to allow users to manage laboratory tasks, track samples, change sample states, trigger alerts, and query any data in the system for presentation in dashboards and reports. And at the end of the day, it's all about getting accurate information into the right hands — via email, secure system access or printed hard copy.

FINALLY, LIMS FOR THE WAY YOU WORK.

TITAN® employs a fresh, intuitive user interface that includes a ribbon-based menu system as well as a tabbed-based workspace to make navigation and multi-tasking a breeze. It also includes wizards for new users and the ability to easily filter and re-order data based on user-selected criteria. TITAN® allows users to efficiently manage, track, query, and organize laboratory and instrument data providing rapid, real-time access that facilitates automated reporting.

DEPLOY TODAY, USE TODAY.

Whether automating data management and reporting or replacing an existing information management system, ATL will work closely with you to develop and execute a sound implementation plan. We will install your data management software, train your database administrator and users on the features and functions of the system, and provide long-term training and comprehensive support on all levels.

BEYOND A LIMS: TITAN® IS A LABORATORY ENTERPRISE RESOURCE PLANNING GIANT.

Highly configurable user screens afford the ability to customize fields to match terms commonly used in your laboratory. Robust instrument integration allows the import of data from a variety of instruments — automatically and securely.

TITAN® maximizes your laboratory's efficiency and productivity like no other.

WITH A NAME LIKE TITAN®, EXPECT GREAT THINGS.

When it comes to having the features that make your laboratory's information management system run smarter and more efficiently, TITAN® more than lives up to its name:

- Fully scalable for larger laboratories as well as smaller local deployments
- Highly configurable, feature-rich, stable packages support specific industries
- Designed for organizations with the goal of standardization across operations at multiple sites
- User definable dashboards facilitate laboratory business management
- The add-on Development Suite includes a Workflow Designer for managing business rules, a View Designer for customizing the interface, an Artifact Designer for extending the database schema and a Report Writer for easy data translation
- Designed, developed and supported within an ISO 9001 environment
- Utilizes Microsoft ClickOnce deployment for easy installation and upgrade
- Can integrate with numerous enterprise packages such as Accounting, SCADA, SAP and others
- Service Oriented Architecture utilizing open XML standards such as WSDL and SOAP allows integration with a broad range of external systems





PACKAGES WITH PURPOSE.

TITAN® REPORTING PACKAGE

This optional, tightly-integrated toolset was created by ATL engineers to give non-IT laboratory users the ability to easily create powerful reports.

The TITAN® Reporting Package employs an intuitive drag-and-drop graphical user interface to allow analysts and managers the ability to quickly create informative reports without any programming. Users can also incorporate graphs, images, calculations, and statistics into their reports.

A step-by-step tutorial for new users — as well as canned, user modifiable report templates — is integrated into the TITAN® Reporting Package.

Additionally, clients can leverage a number of other reporting tools, from Crystal Reports to SQL Server Reporting Services. Other reporting options include Microsoft Excel, PDF, XML, HTML and others.

TITAN® CHEMICAL MANAGEMENT PACKAGE

ATL TITAN® Chemical Management Package (CMP) is a robust, centralized, global inventory system that simplifies regulatory data management, reduces duplication of EH&S requirements, and integrates hazardous material and product stewardship.

This optional package allows users to track compositions, synonyms, physical states, properties, hazard categories, handling and protective gear requirements, and regulatory lists. In addition, more than 65,000 chemical names, CAS#'s, and additional datasets and MSDS's can be added.

ATL TITAN® CMP facilitates the reconciliation of chemical products with an enhanced inventory tracking module and the ability to view storage locations. Plus it will track the movement of materials among storage locations, plants, and business units, affording users the ability to create regulatory compliance reports that meet requirements of SARA 311, SARA 312, SARA 313, and GHS & REACH.

ENGINEERED FOR THE ENTERPRISE ENVIRONMENT.

You expect your laboratory to grow. So do we. We've designed TITAN® to provide the functionality your enterprise needs.

FUNCTIONALITY

TITAN® offers the key LIMS features you need, with customizable workflows and business processes to help support your organization's growth.

CONFIGURABILITY

Whatever your laboratory's focus, TITAN® is configured to provide unparalleled data management. Users have the ability to define and manage workflows along with the business logic.

SECURITY

Multiple levels of protection ensure secure access throughout an organization, Integrated Windows security (Active directory) and application security.

STANDARDS

TITAN® uses industry-standard coding tools and databases to ensure platform stability so users can leverage the Web, Virtual Machines or Citrix.

INTEGRATION

An API is provided to allow easy integration of instrument and external data.

SCALABILITY

TITAN® gracefully handles increasing volumes of data coming from a large study, instrument upload files, or the addition of new laboratory sites.

SCHEDULING

TITAN® includes a user configurable workflow manager to administer scheduling events and trigger user definable alerts to ensure that no hold times are missed.

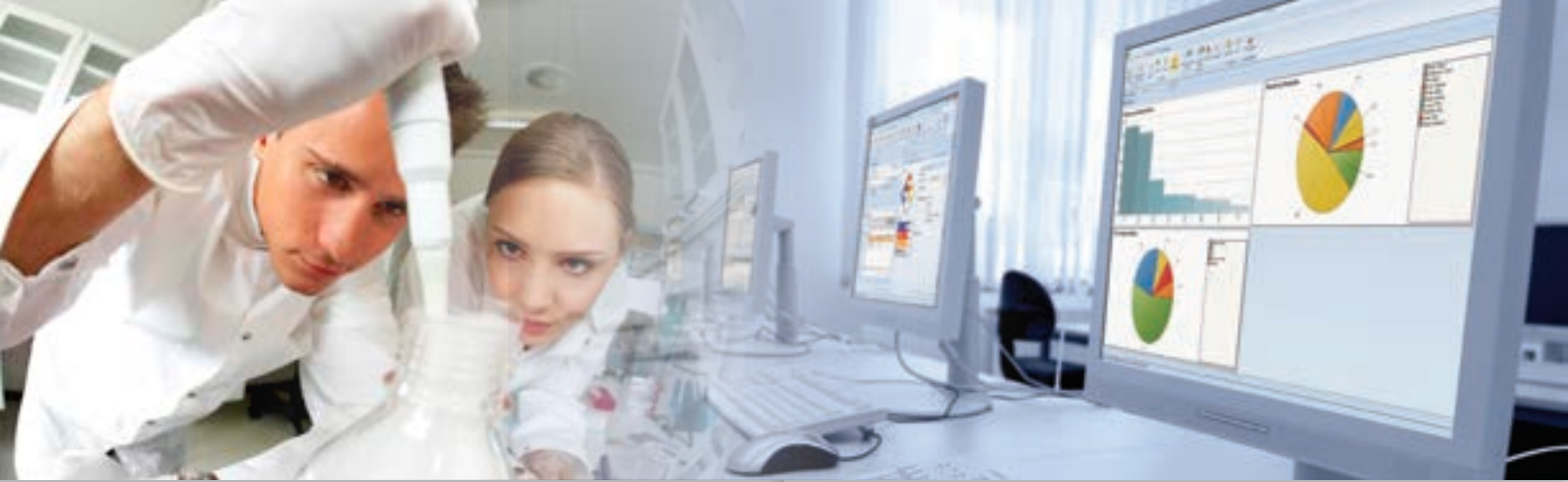
REPORTING

The TITAN® Reporting Package lets you drag and drop vital data into a report template, without any programming. Or, if you have a tool already in place, TITAN® supports all major reporting programs.

AUDIT ABILITY

Full auditing and reporting capabilities are integrated for those laboratories that operate in a regulated environment.





SUPPORT THAT LIVES UP TO ITS NAME.

We're here to provide comprehensive world-class support when you need us. Whatever your question or issue, we'll work with you to resolve it quickly and correctly.

ATL provides superior pre- and post-sales support and dedicated training. All software is backed by comprehensive world-class support, and customers with GOLD or PLATINUM support plans benefit from a dedicated Account Manager, toll-free technical support, free product upgrades, extended support hours, and more.

In addition to on-site and Web-based training, LIMS Boot Camp courses are held biannually to train end users one-on-one with certified instructors. ATL is also dedicated to keeping customers informed of industry news by publishing a quarterly newsletter.

TITAN® and ATL TITAN® are registered trademarks of Accelerated Technology Laboratories, Inc.

"It's refreshing working with a partner that cares as much about the project as our internal team members. I am grateful to the ATL team for their helpfulness in proposing solutions that not only suit our needs, but for their suggestions of ways to improve our overall productivity with TITAN®."

— **John E. Nettles Jr.**
Environmental Health & Safety, Duke Energy

ACCELERATED TECHNOLOGY LABORATORIES, INC.

WEB	ATLAB.COM
PHONE	800.565.LIMS (5467)
OUTSIDE US:	910.673.8165
FAX:	910.673.8166
ADDRESS:	496 HOLLY GROVE SCHOOL RD, WEST END, NC 27376

248-1074v12



From the company that pioneered the first Windows-based LIMS.

In 1994, Accelerated Technology Laboratories, Inc. launched the first commercially-available Windows-based Laboratory Information Management System (LIMS) powered by database engines including Oracle and Microsoft SQL Server.

Since then, ATL has provided LIMS solutions for Fortune 500 companies and to a variety of industries including water & wastewater, analytical, energy (coal, electrical, nuclear), environmental, food & beverage, chemical, government, public health, industrial hygiene, biotechnology, forensics, clinical testing,

manufacturing, and many others. ATL products are installed in hundreds of laboratories with thousands of users around the world.

We hold a strong commitment to quality and invest heavily in research and development to provide our customers with the best available technology and tools. We hire experts — in the fields of chemistry, water and wastewater, microbiology, medical technology, laboratory management, validation, software development, computer science, engineering, and business — who hold various degrees ranging from A.S. and B.S. to M.S. and Ph.D.

ATL is one of few independent LIMS firms that are ISO 9001:2008 certified. Quality is in our company DNA. We have attained Gold Certified Partner status in the Microsoft Partner Program. ATL is also an Oracle Business Alliance Partner and a Citrix Technology Partner. This proves our involvement and expertise in the technology marketplace.

Our alliances and certifications enable us to offer our customers superior software solutions to help them manage their laboratory business — today and into the future — with complete confidence and support at an affordable cost.